



User guide

THE MUSE - REPLACEMENT BATTERY

Thoughtful lighting, responsibly designed in London.

Thank you for making the switch to Tala.
Discover the full Tala family at tala.co.uk

PREPARATION

Please read instructions thoroughly before installation and keep them for future reference.

Improper assembly can undermine the safety and longevity of the product.

Perform battery replacement on a clean surface free from debris.

WARNING

Do not drop, damage or expose the battery pack to water or fire.

Only use replacement batteries from Tala directly.

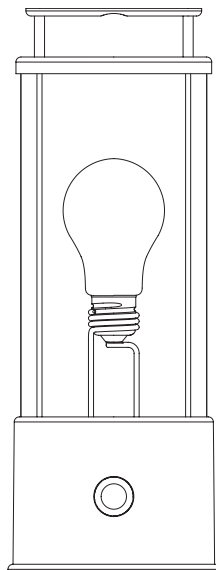
After assembly, ensure all fixings are tightly sealed and do not allow internal components and surfaces to be exposed to water.

AFTER-CARE

Used batteries should be recycled after use.

Tips to prolong the battery life:

- Once fully charged, please remove from charger
- Avoid letting The Muse reach 0% battery, when the low battery indicator starts blinking, it should be recharged
- When not in use, store The Muse with between 25-50% battery (1-2 indicators on)
- During charging, make sure The Muse is uncovered to avoid over-heating



SKU - REP-MUSE-BTY-01

Join the Community

Instagram: @tala | Facebook: talaHQ | Pinterest: TalaLED | Tag: lighttoliveby
Tala Studios, 25B Vyner Street, London E2 9DG | hello@tala.co.uk

Tala Europe B.V, Bertus Aafjeshove 40, Nieuwegein 3437JN, Netherlands

Tala North America, Inc. P.O. Box 89 1051, Port Washington Blvd. Port Washington, NY 11050, USA



STEP 1

Lay the lamp down on a clean surface free of debris.

Peel off the Rubber Pad on the base of The Muse.

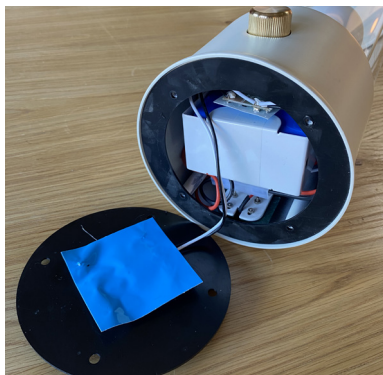
For better adhesion when replacing this pad, remove as much residue as possible. Do not use alcohol or solvents as these will damage the finish of the product.

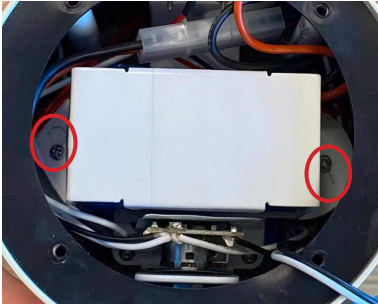


STEP 2

Unscrew the four outer screws on the Base and set the screws aside.

Remove the Base.

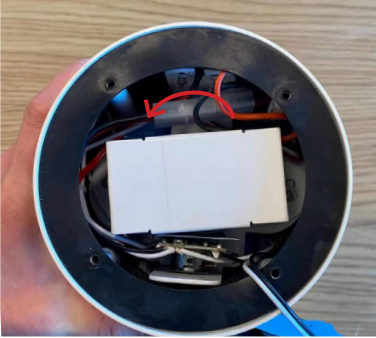




STEP 3

Identify the holding screws for the Battery Bracket.

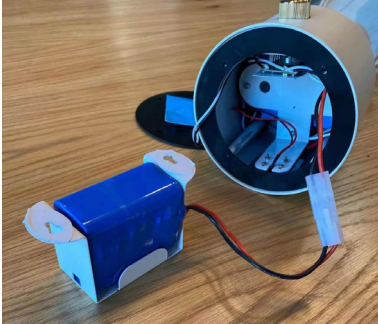
Loosen these with a screwdriver, but do not remove fully.



STEP 4

Twist the Battery Bracket anti-clockwise to release from the holding screws.

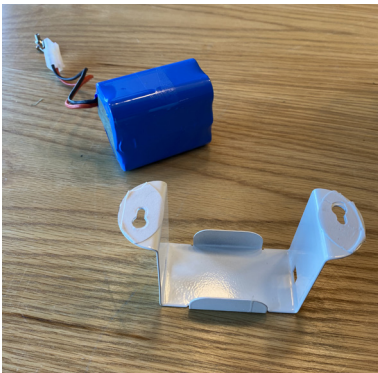
The Battery Bracket can now be removed with the Battery attached.

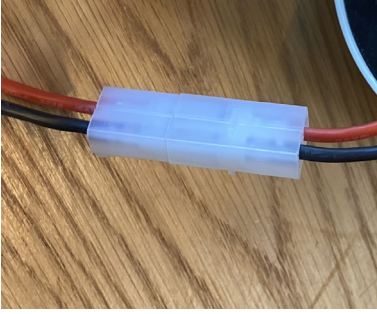


STEP 5

The Battery can be detached from the main body by releasing the white connector.

It can then be removed from the Battery Bracket. This may be secured by tape which can be removed.

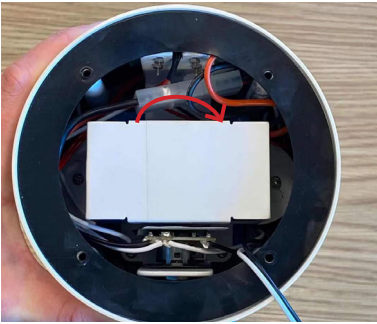




STEP 6

Replace the battery onto the Battery Bracket and re-connect the connectors as shown.

Re-insert the Battery Bracket into The Muse body. Being careful to ensure all cables are out of the way. Do not trap any cables underneath the bracket.



STEP 7

Twist the Battery Bracket clockwise to locate the bracket onto the Holding Screws. Re-tighten the screws to secure in place.

Replace the Base and secure with the four outer screws.



STEP 8

Attach the new Rubber Pad onto the base, ensuring the window aligns with the product information text.



STEP 9

Test the connection is successful by pressing the button at the back of the lamp base and checking the battery level indicators.